

Interactive Surveillance Solutions

VIGIL Client

3xLOGIC VIGIL™ Series Solutions



VIGIL™ Client

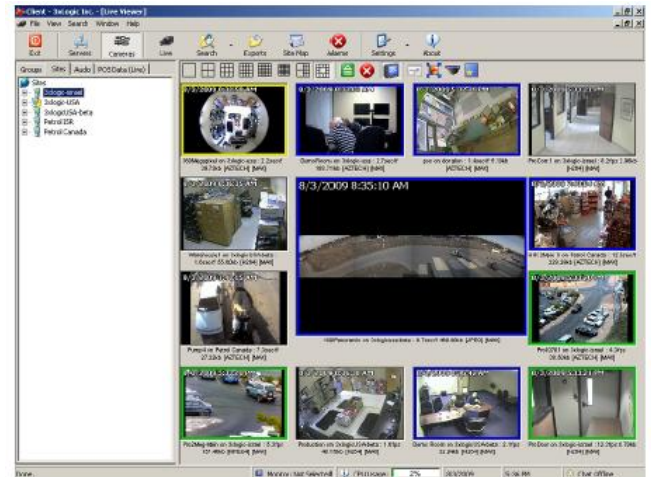
3xLOGIC's VIGIL Client is an intuitive, easy-to-operate and powerful software application for viewing live, POS and recorded surveillance video.

The VIGIL Client can also act as the event analysis application for querying, investigating and extracting digital information, saving the need use an additional application.

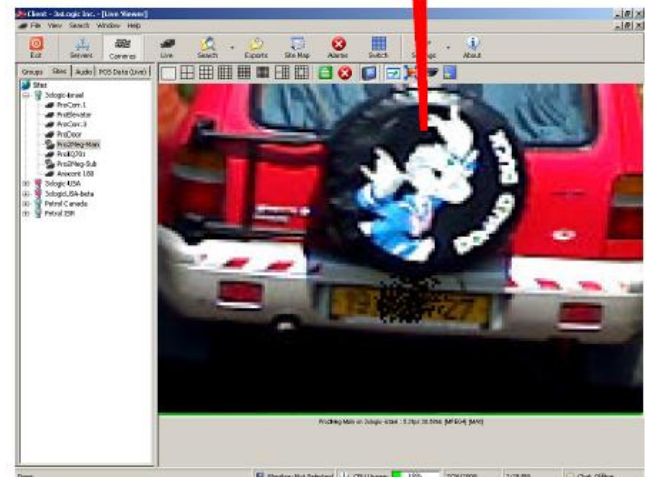
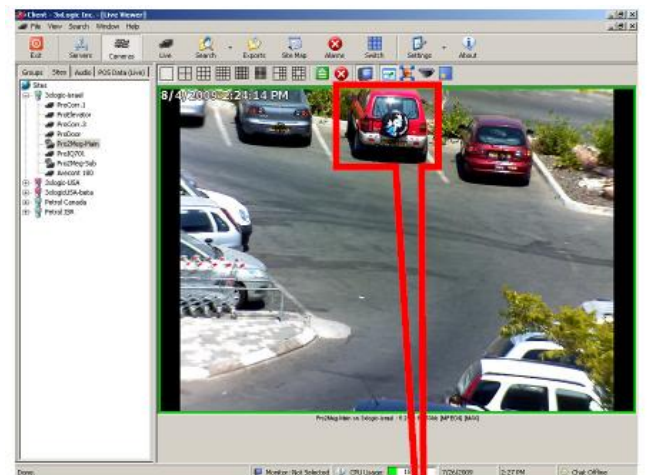
The VIGIL Client includes a powerful built in Map utility, an interactive visual representation of facility layouts and camera locations that displays camera views with a single click (live or playback).

Benefits & Features

- Simultaneously view live video from multiple sites up to 36 cameras.
- Fully-featured remote video viewing.
- Unlimited site software license.
- Download, store, and copy recorded video from VIGIL™ NVRs onto media such as hard drive, DVD, memory stick or CD.
- Design Graphical site maps for detailed facility plans and quick access to NVRs and cameras.
- Compatible with all VIGIL brand NVRs.
- Advanced alarm interface for automatic notification and display of real-time video as well as playback of pre and post alarm recording.
- Rapid video retrieval based on time or date, alarm event, motion with smart search or POS data.
- Supports two way audio and remote chat function.
- Built-in Mapping capabilities to present the site layout and the exact camera location and field of view. Just click on camera icon and handle it in live or playback.



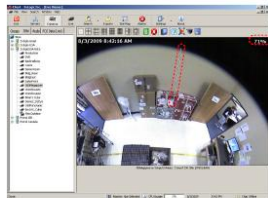
Live View



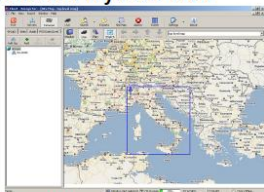
Electronic Zooming



Synchronized Playback View



E-PTZ Capabilities



Unlimited Map layers, Cameras Links



CCTV Virtual Keyboard



3 Megapixel 360° camera Panoramic View

VIGIL Extended Client™

With VIGIL Extended Client, authorized users can view live and recorded video from any location on their organization's network over multiple monitors.

Utilizing all the VIGIL Client features and any Internet connection, users can easily view, live, playback, and handle alarms from remote sites. It provides an intuitive real time monitoring and situation awareness solution. Up to 48 video streams, 4CIF, full frame rate can be monitored simultaneously.

The VIGIL Extended Client perfectly addresses the need of viewing large number of video stream over multiple monitors.



Up to 48 Videos on 3 Extended Monitors

| POS Data (Live) | | | | | | |
|-----------------|----------------------|-----------|-------|---------|------|-----------------------|
| Idx | Timestamp | Receipt # | Reg # | Cashier | Code | Qty. Item |
| 00220 | 6/18/2007 1:29:23 PM | | 1 | 1 | II | Order 1048605 Sele |
| 00269 | 6/18/2007 1:29:23 PM | | 1 | 1 | II | Adjust Payment Chei |
| 00268 | 6/18/2007 1:29:23 PM | | 1 | 1 | II | Start Times: 11:26:45 |
| 00267 | 6/18/2007 1:29:23 PM | | 1 | 1 | II | Clock In Drawer 1 |
| 00266 | 6/18/2007 1:29:23 PM | | 1 | 1 | II | Payment Authorizati |
| 00265 | 6/18/2007 1:29:23 PM | | 1 | 1 | II | Order 1048605 Sele |
| 00264 | 6/18/2007 1:29:23 PM | | | | | |
| 00263 | 6/18/2007 1:29:23 PM | | | | | |
| 00262 | 6/18/2007 1:29:23 PM | | | | | |
| 00261 | 6/18/2007 1:29:23 PM | | | | | |
| 00260 | 6/18/2007 1:29:23 PM | | | | | |
| 00259 | 6/18/2007 1:29:23 PM | | | | | |
| 00258 | 6/18/2007 1:29:23 PM | | | | | |
| 00257 | 6/18/2007 1:29:23 PM | | | | | |
| 00256 | 6/18/2007 1:29:23 PM | | | | | |
| 00255 | 6/18/2007 1:29:23 PM | | | | | |

Real Time Point Of Sale monitoring



| IMAGE QUALITY & RESOLUTION | |
|----------------------------|---|
| <i>Resolution</i> | 1CIF – 8 Mega Pixel |
| <i>Frame Rate</i> | Up to 25 PAL fps per camera |
| <i>IP Resolution</i> | All Standard Resolutions / Megapixel / HD Megapixel/ Super HD Megapixel / Other |
| <i>IP Video Formats</i> | Standard 3:4, 16:9, 180 & 360-degree |
| OPERATING SYSTEM | |
| <i>Software</i> | Windows XP / Vista / 7 (32-bit & 64-bit) |
| <i>Physical OS Drive</i> | Dedicated (250 GB typical) |
| HARDWARE | |
| <i>Processor</i> | Core 2 Duo, Core i3 Quad Core, Core i5, i7 Model Dependant |
| <i>RAM</i> | 2 GB (min.) 3GB DDR3 (min.) |
| <i>Video card (ATI)</i> | 256 MB (min.) 512MB (min.) |

Contact us:



3xLOGIC
www.3xLOGIC.com

Interactive Surveillance Solutions Sdn Bhd
www.intersurve.com
enquiry@intersurve.com